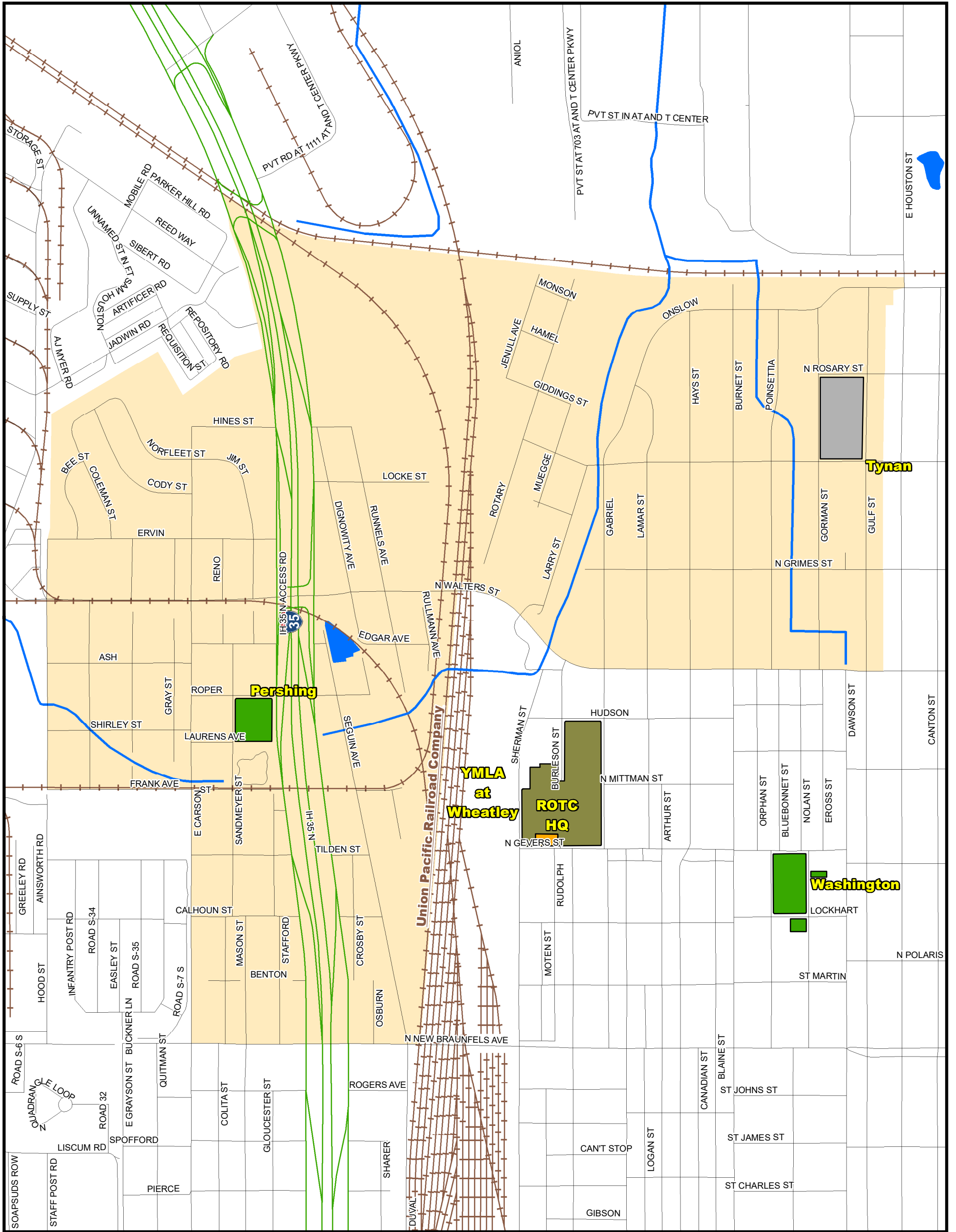
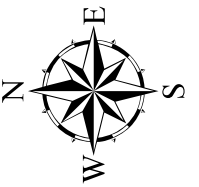


# Attendance Boundary for 2024-2025

**PERSHING**  
**Primary School**  
**Grades Served: HS, PK-5**

**600 SANDMEYER ST.**  
**SAN ANTONIO, TX 78208**



**LEGEND**

1 inch equals 0.15 miles

Last Updated 2019-2020

SAISD Facilities		Route Features		Natural Features	
Facility_Type					
<span style="display: inline-block; width: 15px; height: 15px; background-color: orange; border: 1px solid black;"></span> Administrative	<span style="display: inline-block; width: 15px; height: 15px; background-color: green; border: 1px solid black;"></span> Primary PK/K-5/6	<span style="display: inline-block; width: 15px; height: 15px; background-color: red; border: 1px solid black;"></span> Middle School	Streets	Rivers & Creeks	Water Bodies
<span style="display: inline-block; width: 15px; height: 15px; background-color: gray; border: 1px solid black;"></span> Closed - Pending Reuse	<span style="display: inline-block; width: 15px; height: 15px; background-color: brown; border: 1px solid black;"></span> High School	<span style="display: inline-block; width: 15px; height: 15px; background-color: purple; border: 1px solid black;"></span> PK/K-8 School	Railroad Tracks		
		<span style="display: inline-block; width: 15px; height: 15px; background-color: yellow; border: 1px solid black;"></span> Special Program			