

Bond 2016 Community Meeting

Chief Operations Officer Willie Burroughs



Bond 2016 - Input

Community Advisory Committee – Quarterly meetings, beginning June 14, 2017

District 3 Committee Members

- Fatema Basrai
- Pat Jasso
- Denise Ojeda

Schematic Design presentation (PAT meeting 1) – March 29, 2018

- Julie May, Principal
- Frances Mares
- Bianca Polendo
- Elizabeth Rubio
- Cynthia Rodriguez
- Manuel Reyna
- Julian Barrios
- Peter Acosta
- Debbie Silliman

Design review (PAT meeting 2) – April 24, 2018

- Julie May, Principal
- Frances Mares
- Bianca Polendo
- Elizabeth Rubio
- Cynthia Rodriguez
- Joshua Carpenter
- Monica Garica
- Bruce Day
- Manuel Reyna
- Julian Barrios
- Peter Acosta
- Debbie Silliman
- Emily Borchardt
- Monica DeHoyas
- John Castillo
- Samantha Calvert

Bond 2016 - Input

Stakeholder meeting – October 1, 2018

- Julie May, Principal
- Frances Mares
- Bianca Polendo
- Elizabeth Rubio
- Cynthia Rodriguez
- Manuel Reyna
- Emily Borchardt
- Raquel Sanchez

Bond 2016 - Scope

Total Construction Budget: \$28,790,583



Renovations and upgrades to include:

- Classroom spaces (general learning, science, special education)
- Restrooms
- Art and Music Spaces
- Cafeteria/kitchen
- Auditorium
- Heating, ventilation and air conditioning
- Plumbing and electrical
- Technology infrastructure for new and renovated spaces
- Lighting
- Fire sprinkler systems
- Special needs accessibility in entryways, restrooms, and other areas
- Front-entry modifications to improve security
- Roofing, building exterior and site improvements

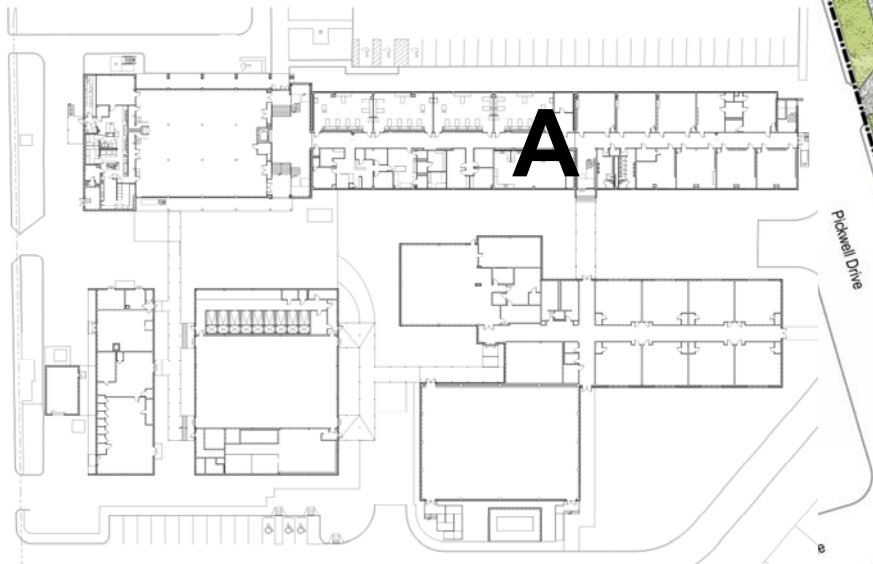
Bond 2016 – Proposed site



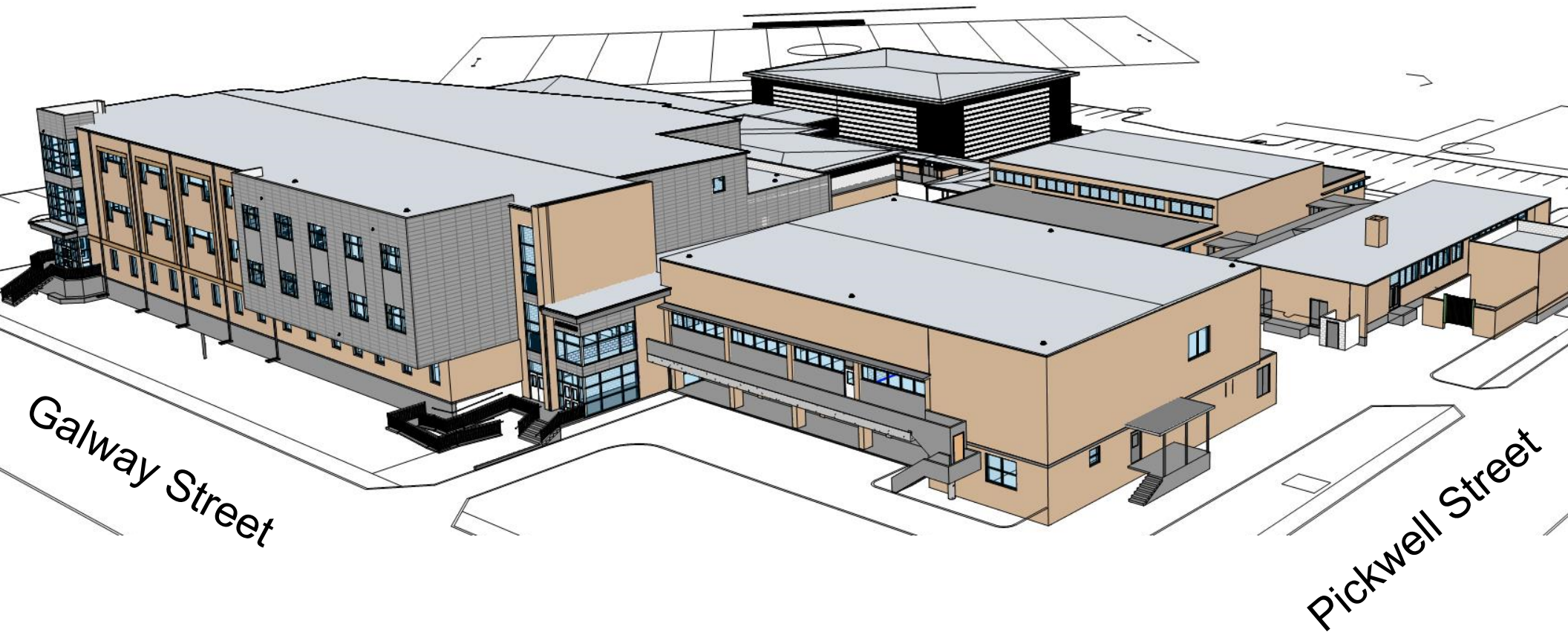
Bond 2016 – Proposed site

Proposed scope

- A. Demolish existing two-story academic wing
- B. Build new three-story academic wing
- C. Renovations in kitchen, cafeteria and auditorium
- D. New parking and drop-off



Bond 2016



Bond 2016 – First floor

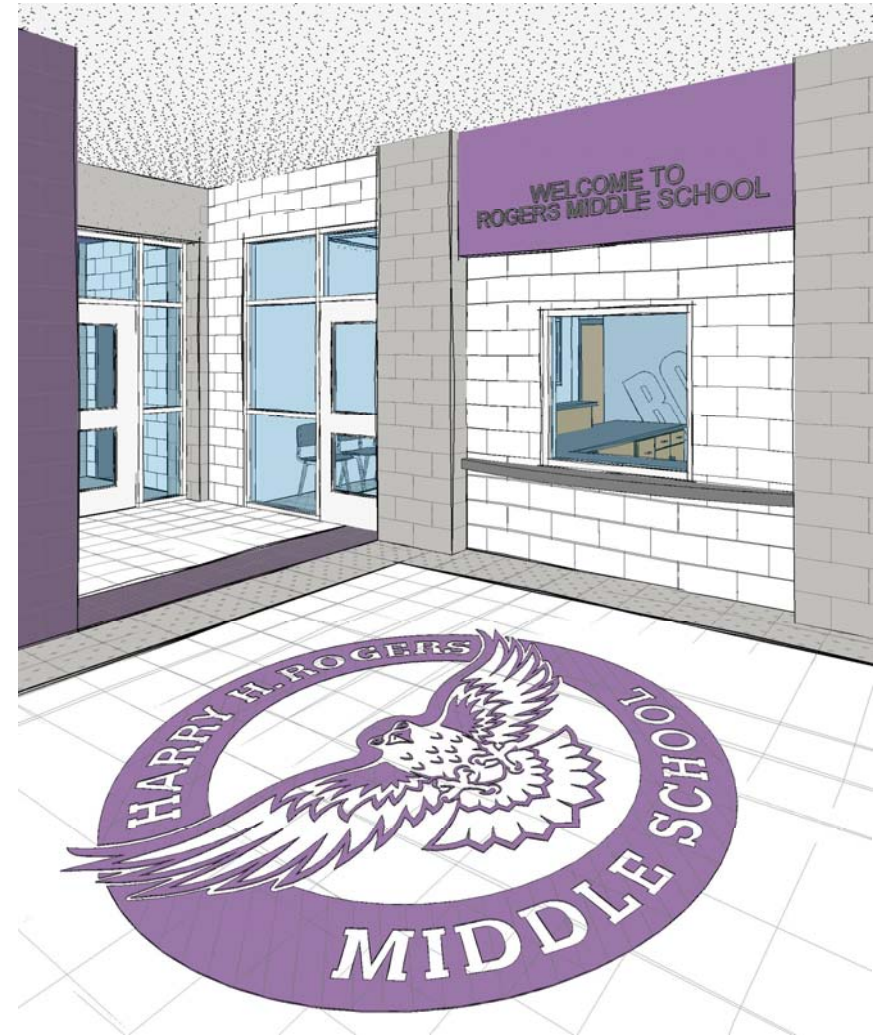
Academic additions & renovations

- Adequate administration space
- New front door w/secured vestibule
- New SPED Life Skills
- New collaborative spaces
- New art classroom
- Renovated Child Nutrition Services



Bond 2016 – First floor

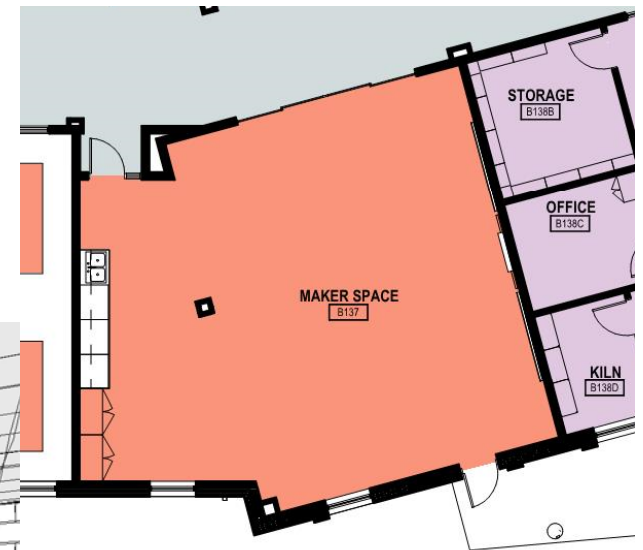
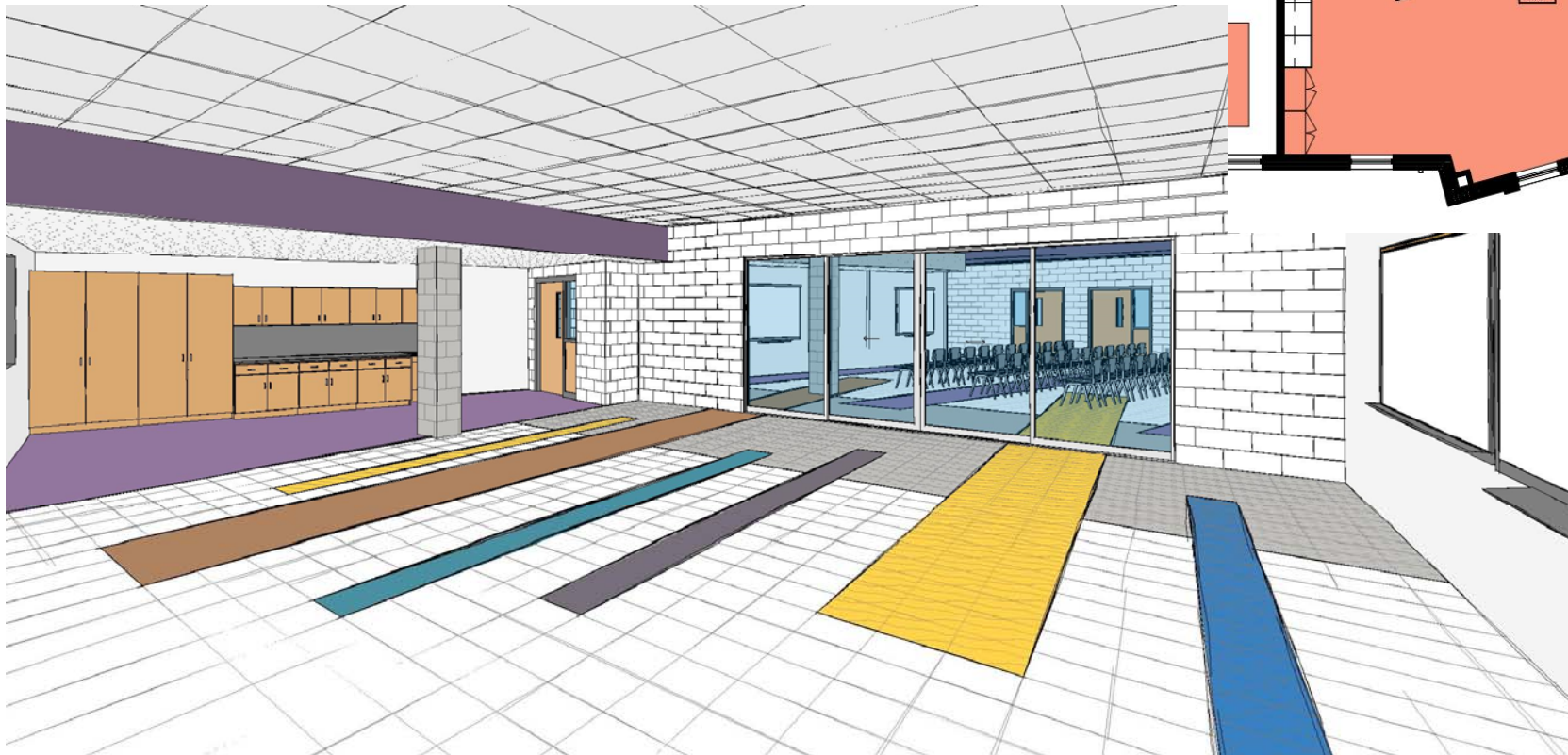
Secured vestibule



Bond 2016 – First floor

Maker space

- Flexible furniture
- Digital teaching wall
- Interactive learning
- Integrated technology



Bond 2016 – First floor

Art Lab & Porch

- Flexible furniture
- Digital teaching wall
- Interactive learning
- Integrated technology
- Kiln Room
- Art porch
 - Adjacent outdoor covered work space



Bond 2016 – Second floor

Academic additions & renovations

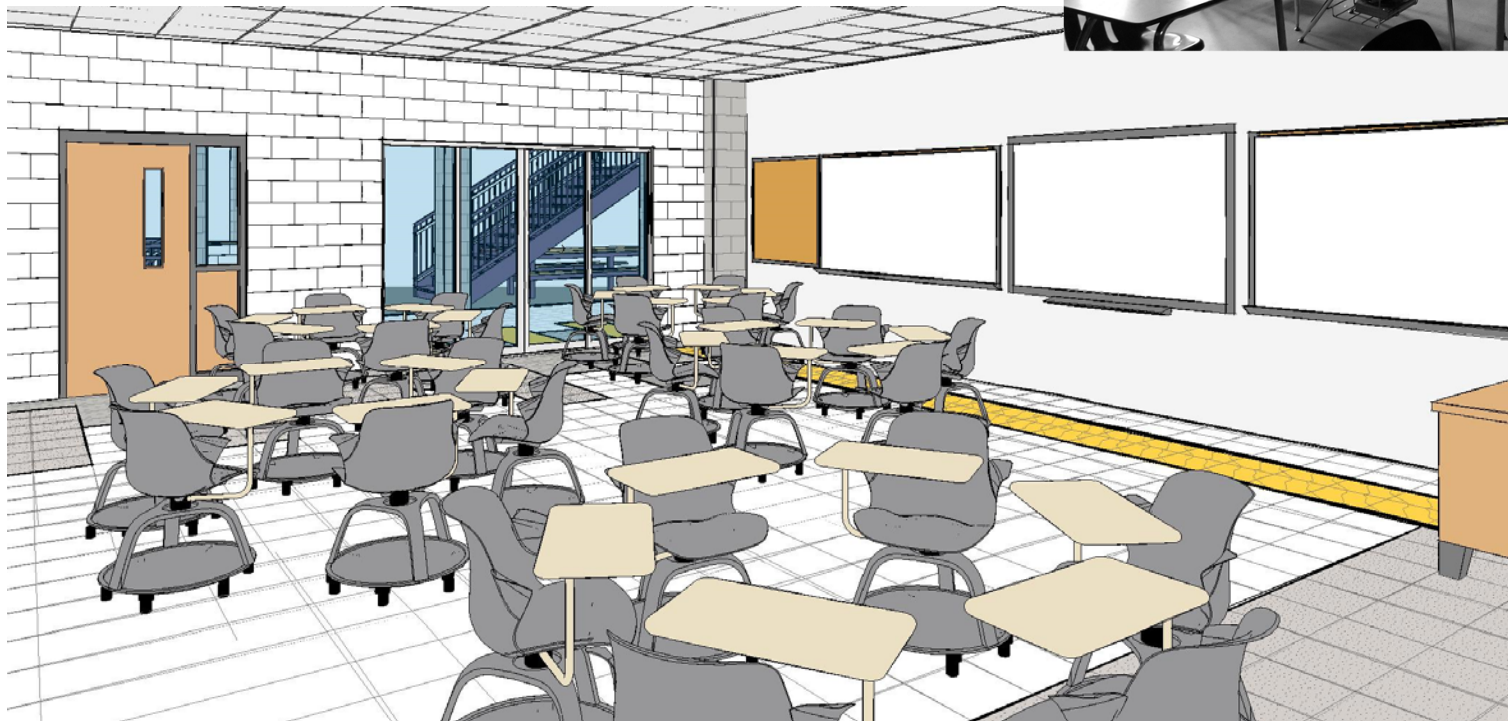
- New general learning classrooms
- New science labs
- New collaborative spaces
- New Fine Arts



Bond 2016 – Second floor

Future ready classrooms

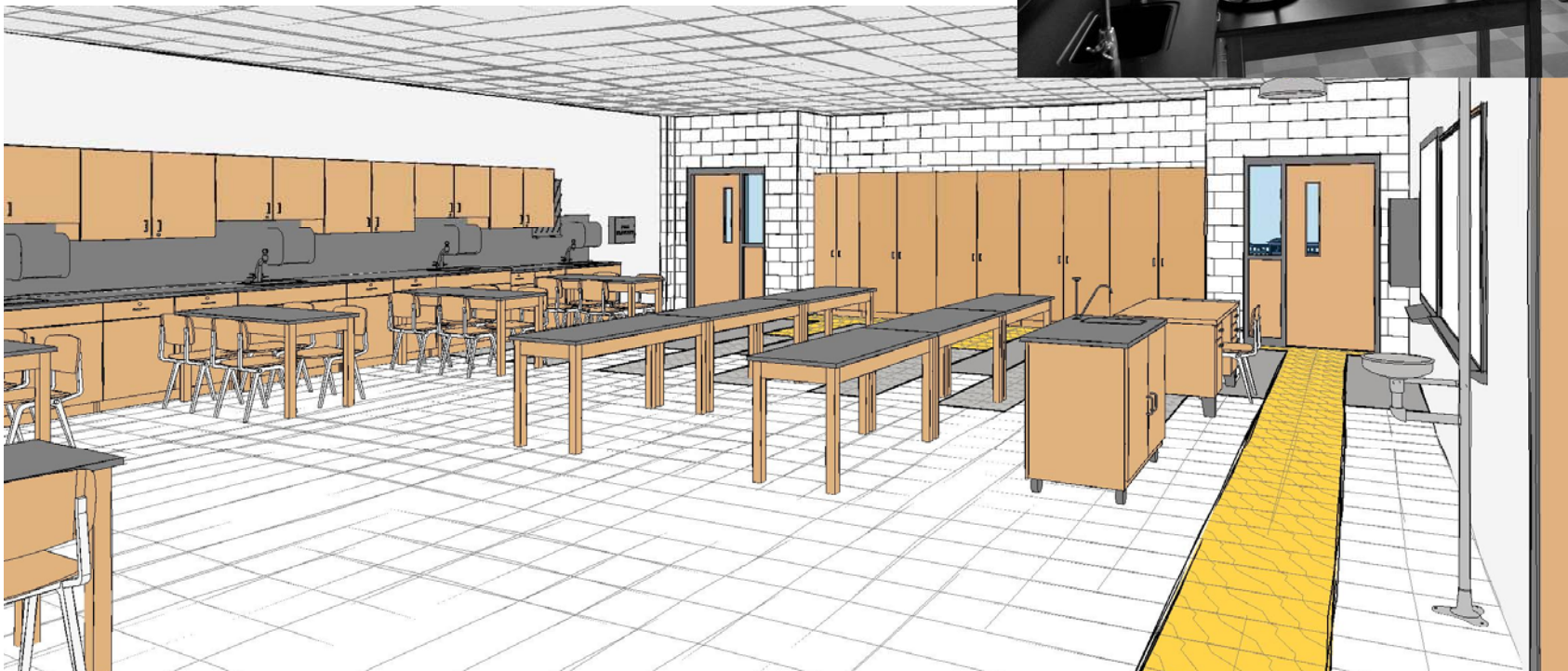
- Flexible furniture
- Digital teaching wall
- Interactive learning
- Integrated technology



Bond 2016 – Second floor

Future ready science labs

- Flexible furniture
- Digital teaching wall
- Interactive learning
- Integrated technology



Bond 2016 – Second floor

Multi-purpose music rooms

- Choir
- Orchestra



Bond 2016 – Third floor

Academic additions & renovations

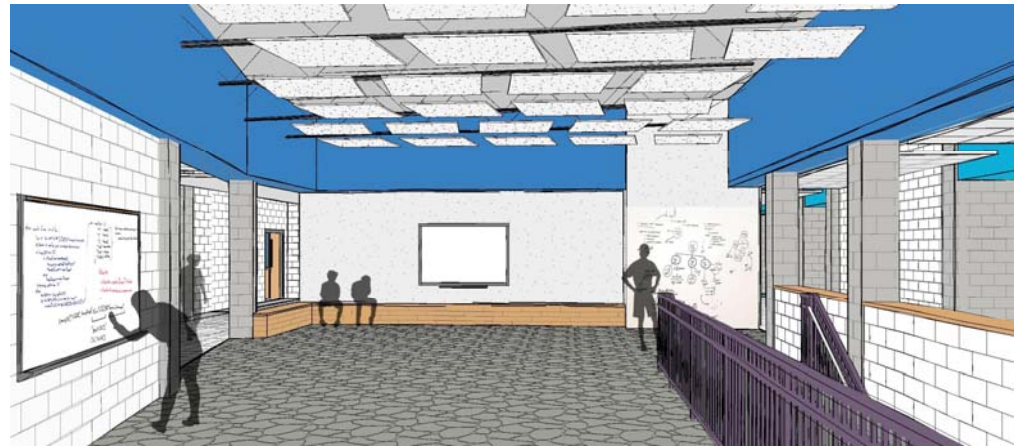
- New general learning classrooms
- New science labs
- New collaborative spaces
- New teacher workroom



Bond 2016 – Third floor

Collaborative spaces

- Flexible furniture
- Digital teaching wall
- Interactive learning
- Integrated technology



Bond 2016 – Phasing Plan

Phase 1 March 2019 – March 2020

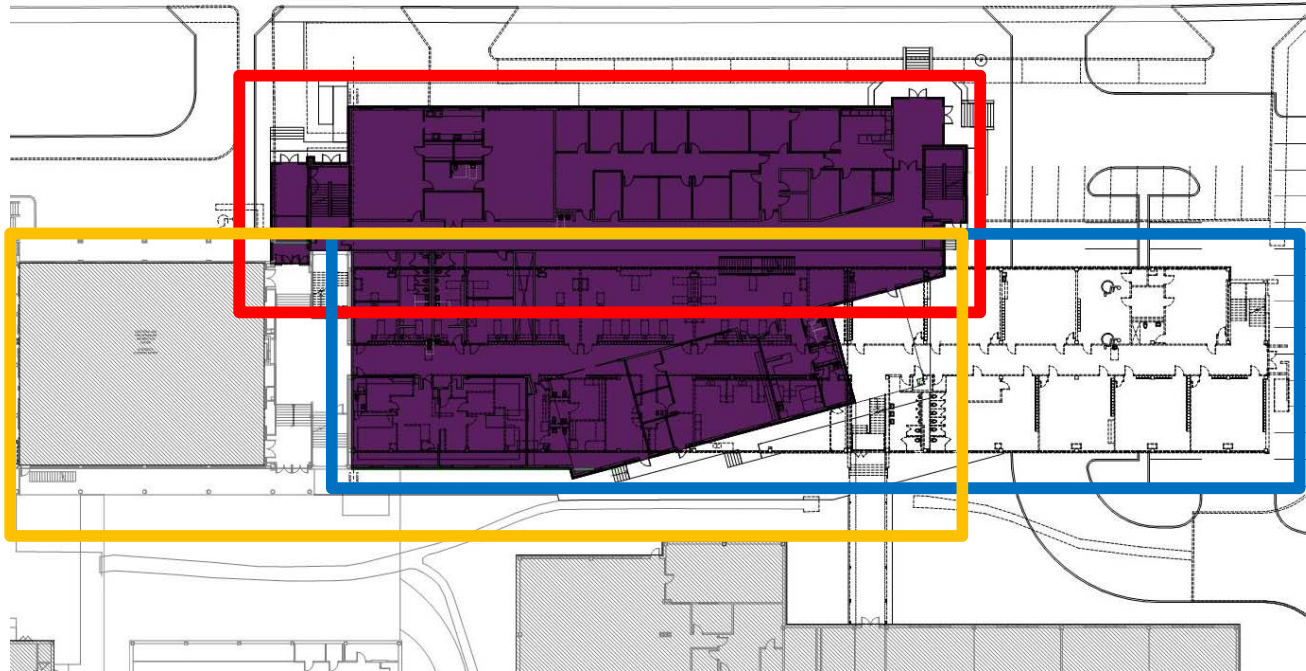
- Construct north section of new addition

Phase 2 March 2020 – June 2020

- Occupy new north section addition

Phase 3 March 2020 – June 2021

- Demolition of existing academic wing
- Construct south section of new addition
- Renovations in food services and auditorium



Bond 2016



Bond 2016

Questions