



SAISD Safety and Extreme Weather Emergency Plans

This handbook is to provide coaches and administrators guidelines in case of severe weather conditions. Severe weather and emergency situations may arise at any time during athletic events. Since the weather is unpredictable, you can never give exact guidelines. Good common sense should also be utilized. Severe weather is defined as any weather-related situation requiring all athletes and spectators to move to safe shelter. Expedient action must be taken in order to prevent life-threatening conditions. Student safety takes priority over the completion of an athletic event.

Coaches and administrators are advised to review the following guidelines to be prepared should a severe weather situation arise.

Athletic Safety and Compliance Coordinators

Jacob Gonzales, Head Athletic Trainer

Charles Young, Head Athletic Trainer

Thanks to all the Athletic Trainers who assisted with information

Emergency Contacts

SAISD Police - 210-354-9000

SAISD Athletic Trainers

| | |
|------------------------------------------|---------------------|
| Samantha Saenz, Brackenridge High School | 210-228-1200 x31039 |
| Alex May, Burbank High School | 210-228-1210 x32019 |
| Mark Ruiz, Edison High School | 210-738-9720 x33048 |
| Daniela Ovalle, Fox Tech High School | 210-738-9730 x |
| Jenny Therkelsen, Highlands High School | 210-438-6800 x35045 |
| Jacob Gonzales, Sam Houston High School | 210-978-7900 x36018 |
| Charles Young, Jefferson High School | 210-438-6570 x37047 |
| Robert White, Lanier High School | 210-978-7910 x38054 |
| Casey Ovalle, YMLA | 210-354-9652 x74653 |
| Analisa Arguello, YWLA | 210-364-8377x 72329 |
| Camile Crawford | 210-412-5155 |
| Mollie Ayala | 210-364-8377 |

SAISD Athletic Administration – 210-554-2655

Fred Anthony, Executive Director of Athletics
Gerald Gonzalez, Athletic Director
Albert Torres, Asst. Athletic Director
Marissa Muniz, Asst. Athletic Director
Malachi Nellum, Asst. Athletic Director
Courtney Davis, Asst. Athletic Director

Safe Shelter:

A safe location is any substantial, frequently inhabited building. The building should have four solid walls (not dug out), electrical and telephone wiring, and plumbing, all aiding in grounding a structure.

1. The second choice for a safer location from the lightning hazard is a fully enclosed vehicle with a metal roof and the windows closed. It is important to not touch any part of the metal framework of the vehicle while inside it during ongoing thunderstorms.
2. It is not safe to shower, bathe, or talk on landline phones while inside of a safe shelter during thunderstorms. (Cell phones are okay.)

Lightning Monitoring Options:

Flash-to-Bang:

To use the flash-to-bang method, begin counting when sighting a lightning flash. Counting is stopped when the associated bang (thunder) is heard. Divide this count by five to determine the distance to the lightning flash (in miles). For example, a flash-to-bang count of thirty seconds equates to a distance of six miles. Lightning has struck from as far away as ten miles from the storm center.

All outdoor Coaches should use the following Lightening Apps:

Pocket Perry

Weather Bug

SAISD Lightning Policy / Safe Shelter

The UIL Lightning Safety policy will be followed.

If severe weather and / or lightning are detected, an announcement will be made to clear the fields and proceed to safe shelter. Safe shelter locations are listed in the table for each school or activity site.

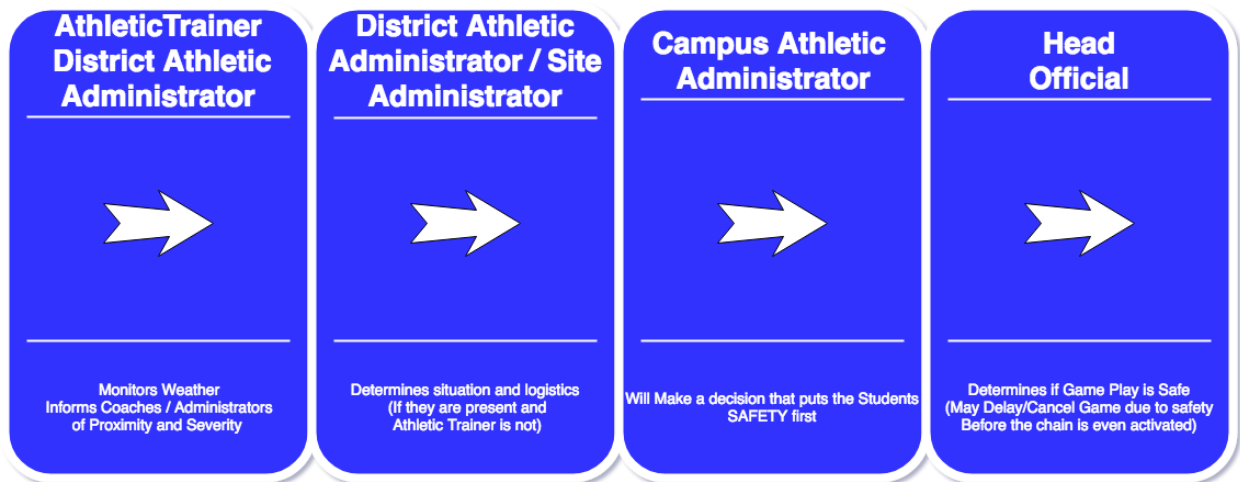
Athletes and coaches will proceed to the nearest building. The coaches will provide an area for visiting teams and coaches. Spectators must be advised to clear the fields and proceed to safe shelter.

1. Follow the Chain of Command Chart below that identifies who is to make the call to remove individuals from the field.
2. Name a designated weather watcher - a person who actively looks for the signs of threatening weather and notifies the chain of command if severe weather becomes dangerous. (Athletic Trainer, Head Coach, Athletic Administrator)
3. Have a means of monitoring local weather forecasts and warnings. (See List of Options Below)
4. Designate a safe shelter for each venue.
5. Use the flash-to-bang count (Described below) to determine when to go to safety. See method of determining flash-to-bang count below.
6. Once activities have been suspended, wait at least thirty minutes following the last sound of thunder or lightning flash within a **10-mile radius** before resuming an activity or returning outdoors. Once there has been on Lighting Strike for **30 minutes**, play may resume.
7. Avoid being at the highest point in an open field, in contact with, or in proximity to the highest point, as well as being on open water. Do not take shelter under or near trees, flagpoles, or light poles.
8. Assume the lightning safe position (crouched on the ground, weight on the balls of the feet, feet together, head lowered, and ears covered) for individuals who feel their hair stand on end, skin tingle, or hear "crackling" noises. Do not lie flat on the ground.

Observe the following basic first aid procedures in managing victims of a lightning strike:

- Activate local EMS.
 - Lightning victims do not "carry a charge" and are safe to touch.
 - If necessary, move the victim with care to a safer location.
 - Evaluate airway, breathing, and circulation, and begin CPR if necessary.
 - Evaluate and treat for hypothermia, shock, fractures, and/or burns.
9. All individuals have the right to leave an athletic site to seek a safe structure if the person feels in danger of impending lightning activity, without fear of repercussions or penalties from anyone.

SAISD Severe Weather Chain of Command



- In the Event of Sever Weather, the Chain of Command will be followed in this order if in attendance:
 1. Athletic Trainer
 2. Athletic Administrator
 3. Head Coach / Assistant Coach
 4. Game Officials
- If the Athletic Trainer is not in attendance, the Head Coach will assign a staff person to monitor the weather.

NOTE: Athletic Administration must be contacted prior to any events being cancelled.

SAISD Staff Responsibilities:

- Have cell phone available on field in case of emergency
- Designate staff person to meet and direct EMS to scene of emergency
- Have gate keys available in case of emergency
- Accompany any injured student or district personnel to the hospital
- Notify parents, guardians or next of kin. Inform administration
- Provide medical history when available
- Complete appropriate documentation

SAISD Police and Administrators must make sure that emergency entrances remain open and clear of obstructions during games.

SAISD Cold Weather Guidelines for Outdoor Athletic Events

The health and safety of our students and staff members is the primary concern of all decisions made in regard to practicing in extreme cold. Head Coaches must use good judgment when making decisions about practicing outdoors in extremely cold weather. The following guidelines were established to provide a safe and healthy environment for our students participating in outdoor activities. *All coaches are responsible for ensuring these guidelines are followed.*

Cold weather is defined as any temperature that can negatively affect the body's regulatory system. Temperatures do not have to be freezing to be harmful. Individuals participating in outdoor activity in cold, wet, or windy conditions are at risk for environmental cold injuries.

Signs of Cold Exposure:

- Breathing of cold air can trigger asthma attack
- Coughing, chest tightness, burning sensation in throat and nasal passage
- Reduction of strength, power, endurance, and aerobic capacity
- Core body temperature reduction, causing reduction of motor output

Signs of Cold Recognition:

- Shivering, a means for the body to generate heat
- Excessive shivering contributes to fatigue, loss of motor skills
- Numbness and pain in fingers, toes, ears, and exposed facial tissue
- Drop in core temperature; athlete exhibits sluggishness, slowed speech, disoriented

Cold Weather Caution: When the temperature or wind-chill (which is lower than actual temperature) is from 40°F-32°F.

- No modification of practice, but a warning will be given to coaches and athletes.
- Coaches and Athletic Trainers should emphasize the importance of following the UIL Cold Weather Illness Recommendations.
- Keep a very close watch on those "high risk" athletes.

NOTE: Middle School Outdoor Events may be cancelled.

Cold Weather Warning:

- When temperature or wind chill is from 32°F - 20°F, there may be modified participation of outside practices and games.
- Instruct athletes on how to properly dress for the cold weather- warm-ups, hoods/knit caps, and gloves if athlete has them
- Warm-up will start indoors (stretching, etc.) not to reduce the 45 minutes of outside time.
- Practice should keep an individual moving, and all involved. Practices should avoid a big sweat in the first 20 minutes, and eliminate the athletes from being wet and sitting around watching in the cold temperatures.

NOTE: Middle School outdoor activities will be cancelled

For All Levels:

- There may be modified participation of outside practices and games.
- Instruct athletes on how to properly dress for the cold weather- warm-ups, hoods/knit caps, and gloves if athlete has them
- Warm-up will start indoors (stretching, etc.) not to reduce the 45 minutes of outside time.
- Practice should keep an individual moving and all involved. Practices should avoid a big sweat in the first 20 minutes, and eliminate the athletes from being wet and sitting around watching in the cold temperatures.
- Wind Chill @ or below 32 degrees with no precipitation: Athletes may stay outside for 45 minutes with a 10-minute recovery / warm-up inside.

Cold Weather Termination:

DRY - When temperature or wind chill reaches below 20°F, there may be a termination of outside practices and games.

WET – When temperature or wind chill reaches 32°F or below, there may be termination of outside practices and games.

SAISD Hot Weather Guidelines for Outdoor Athletic Practice

Head Coaches must use good judgment when making decisions about practicing outdoors in extremely hot weather. The following guidelines have been established in order to provide a safe and healthy environment for our students who are participating in outdoor activities. *All coaches are responsible for ensuring these guidelines are followed.*

| WBGT Activity Guidelines | |
|---------------------------------|-----------------------------------------------------------------------------------------------------------------------------------------------------------------------------------------------------------------------------------------------------------------------------------------------------------------------------------------------------------------------------------------------------------|
| Class 3 | Activity Guidelines |
| < 82.0 | Normal Activities - Provide at least three separate rest breaks each hour with a minimum duration of 3 min each during the workout. |
| 82.0 - 86.9 | Use discretion for intense or prolonged exercise; Provide at least three separate rest breaks each hour with a minimum duration of 4 min each. |
| 87.0 - 90.0 | Maximum practice time is 2 hours; <u>For Football:</u> players are restricted to helmet, shoulder pads, and shorts during practice. If the WBGT rises to this level during practice, players may continue to work out wearing football pants without changing to shorts. <u>For All Sports:</u> Provide at least four separate rest breaks each hour with a minimum duration of 4 min each. |
| 90.1 - 92.0 | Maximum practice time is 1 hour; <u>For Football:</u> No protective equipment may be worn during practice, and there may be no conditioning activities. <u>For All Sports:</u> There must be 20 min of rest breaks distributed throughout the hour of practice. |
| ≥92.1 | No outdoor workouts. Delay practices until a cooler WBGT is reached. |

**Values in the above chart are WBGT measurements (not temperature or heat index measurements).*

BEAT THE HEAT

Summer's high temperatures put student athletes at increased risk of heat illness. There are several types of heat illness. They range in severity, from heat cramps and heat exhaustion, which are common but not severe, to heat stroke, which can be deadly. Although heat illnesses can be fatal, death is preventable if they're quickly recognized and properly treated.

DEHYDRATION AND HEAT ILLNESSES



As a rule-of-thumb, most athletes should consume 200 to 300 milliliters of fluid every

15 MINUTES
OF EXERCISE.

It takes only **30 MINUTES** for cell damage to occur with a core body temperature of 105 degrees.



Currently, 13 states have heat-acclimatization policies, for secondary school athletics with New Jersey being the first.



Exertional heat stroke is one of the top three killers of athletes and soldiers in training.

- From 2010-15, 20 athletic heat stroke fatalities were reported.
- It takes seven to 14 days for a body to adapt to exercising in the heat.
- Dehydration at levels of 3 to 4 percent body mass loss can reduce muscle strength by an estimated 2 percent.

SAFETY TIPS



Have sports drinks on hand for workout sessions lasting longer than an hour.

Keep beverages cold – cold beverages are consumed 50 percent more than warm beverages.

Hydrate before, during and after activity.

Remove unnecessary equipment, such as helmets and padding, when environmental conditions become extreme.



Clothing worn by athletes should be light colored, lightweight and protect against the sun.

- For the first week or so, hold shorter practices with lighter equipment so players can acclimate to the heat.
- Follow a work-to-rest ratio, such as 10-minute breaks after 40 minutes of exercise.
- Get an accurate measurement of heat stress using a wet-bulb globe temperature, which accounts for ambient temperature, relative humidity and radiation from the sun.
- If someone is suffering from exertional heat stroke, remember to cool first and transport second.
- Have large cold tubs ready before all practices and games in case cold water immersion is needed to treat exertional heat stroke.

SIGNS OF MINOR HEAT ILLNESS



Dizziness

Cramps, muscular tightening and spasms



Lightheadedness, when not associated with other symptoms

EARLY WARNING SIGNS OF EXERTIONAL HEAT STROKE

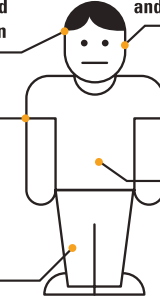
Headache, dizziness, confusion and disorientation

Excessive sweating and/or flushing

Fatigue

Nausea and/or vomiting

Chills and/or goose bumps



SIGNS OF EXERTIONAL HEAT STROKE



Core body temperature of more than 105 degrees



Signs of nervous system dysfunction, such as confusion, aggression and loss of consciousness



Increased heart rate

Rapid breathing

Seizures

Low blood pressure



Sources: Korey Stringer Institute, American Medical Society for Sports Medicine, NATA

Be aware of temperature and humidity levels. Change practice length, intensity and equipment use as the levels rise.

It should be easy for children to drink fluids during practice, and you should remind them to drink regularly.

Fluid breaks should be scheduled for all practices and become more frequent as the heat and humidity levels rise.

Always have contact information for your athletic trainer available.

Examples of rapid cooling are as follows (please use what you have available):

- Remove from heat this includes but not limited to: Shade, air-condition room, etc.
- Cold Water Immersion: Utilization of tub, tarp, whirlpool, etc.
- Dosing it with cold water; i.e.. Using ice water from coolers on the body directly, cold showers, etc.
- Cold towels making sure to replace them when they are no longer cold
- Ice bags in armpits and groin
- Fanning Athlete

The District Athletic Trainers will provide quality care as delineated by best scope and practice guidelines.

Emergency Procedures / Protocols

In case of an emergency and 911 needs to be activated, the following protocols need to be followed:

1. Call 911 to activate EMS
2. Request EMS personnel to the address of the facility
3. Say the following:

“We have an injured person that needs emergency treatment”

4. Provide EMS the following information:
 - a. Name of person calling
 - b. Number of victims and their condition
 - c. First aid treatment initiated
 - d. Specific information to locate emergency scene:

Lockdown

In the event of a lockdown situation occurring during practice or game, coaches will follow the SAISD procedures for lockdown. Athletes and coaches of opposing teams will be led by the home team's coaches to a safe area.

| High Schools | Address | Phone |
|---------------------------|---------------------------------------|--------------|
| Brackenridge | 400 Eagleland Dr. / 78210 | 210-228-1200 |
| Burbank | 1002 Edwards St. / 78204 | 210-228-1210 |
| Edison | 701 Santa Monica Dr. / 78212 | 210-738-9720 |
| Fox Tech | 637 N. Main Ave. / 78205 | 210-738-9730 |
| Highlands | 3118 Elgin Ave. / 78210 | 210-438-6800 |
| Houston | 4635 E. Houston St. / 78220 | 210-978-7900 |
| Jefferson | 723 Donaldson Ave. / 78201 | 210-438-6570 |
| Lanier | 1514 W. Cesar E. Chavez Blvd. / 78207 | 210-978-7910 |
| YMLA @ Wheatley | 415 Gabriel St. / 78202 | 210-738-9750 |
| YWLA | 2123 W. Huisache Ave / 78201 | 210-438-6525 |
| Middle Schools | Address | Phone |
| Davis | 4702 E. Houston St. / 78220 | 210-978-7920 |
| Harris | 325 Pruitt Ave. / 78204 | 210-228-1220 |
| Hot Wells | 400 Hot Wells Blvd. / 78223 | 210-438-6835 |
| King @ S.H Gates Elem | 510 Morningview Dr. / 78220 | 210-978-7980 |
| Longfellow | 1130 E. Sunshine Dr. / 78228 | 210-438-6520 |
| Kelly at Lowell | 919 Thompson Place / 78226 | 210-228-1225 |
| Poe | 814 Aransas Ave. / 78210 | 210-228-1235 |
| Rhodes | 3000 Tampico St. / 78207 | 210-978-7925 |
| Rogers | 314 Galway St. / 78223 | 210-438-6840 |
| Tafolla | 1303 W. Cesar E. Chavez Blvd. / 78207 | 210-978-7930 |
| Whittier | 2101 Edison Dr. / 78201 | 210-738-9755 |
| YWLA | 2123 Huisache Ave. / 78201 | 210-438-6525 |
| YMLA @ Wheatley | 415 Gabriel St. / 78202 | 210-738-9750 |
| Academy Schools | Address | Phone |
| ALA | 637 N. Main / 78205 | 210-738-9763 |
| Bonham | 925 S. St. Mary's / 78205 | 210-228-3300 |
| Bowden | 515 Willow St. / 78202 | 210-738-9770 |
| Cotton | 1616 Blanco / 78212 | 210-738-9780 |
| Crockett | 2215 Morales St. / 78207 | 210-7389785 |
| Democracy Prep at Stewart | 1950 Rigsby / 78210 | 210-438-6875 |
| Fenwick | 1930 Waverly Ave. / 78228 | 210-438-6540 |
| Hawthorne | 115 W. Josephine / 78212 | 210-738-9795 |
| Irving | 1300 Delgado St. / 78207 | 210-738-9740 |
| Mission | 9210 S. Presa | 210-438-6880 |
| Steele Montessori | 2630 Sally Gay Dr. / 78223 | 210-438-6870 |
| Twain | 2411 San Pedro Ave. / 78212 | 210-738-9745 |
| Will Rogers | 314 Galway / 78223 | 210-438-6840 |
| Woodlawn | 1717 W. Magnolia / 78210 | 210-438-6560 |

Site-Specific Emergency Information

| SAISD High Schools | | | | | |
|----------------------------------------------------------------|--------------------------------------------------------------|--------------------------------------------------------------------------------------------------------------------------------------------------------------------------------------------------------------------------------------------------------------------------------------------------------------------------------------------------------------------------------------------------------------------------------------------------------------------------------------------------------------------------------------------------------------------------------------------------|----------------------------------------------------------------------------------------------------------------------------------------------------------------------------|-------------------------------------------------------------------------------------------------------------------------------------------------------------------------------|----------------------------------------------------------------------------|
| Site | Address | Specific information to locate emergency scene | Additional Safe Shelter Info. | AED Location(s) | Additional Information |
| Brackenridge High School | 400 Eagleland Drive. 78210 | <p>Tennis courts: west side of campus</p> <p>Softball field: west side of campus</p> <p>Baseball field: southwest side of campus—follow emergency lane</p> <p>Athletic training room: south side of campus—follow emergency lane to back exit.</p> <p>Football, soccer, track and court sports: Come to the south end of the football field on St. Mary's Street. There is a gated entrance; someone will be there to guide you to the injured person(s).</p> | <ul style="list-style-type: none"> • Gym area • Career/ Technical Education Building • Team Buses • Spectator vehicles | <ol style="list-style-type: none"> 1. In the hallway between the main gym and the secondary gym. 2. Main building by the front office. | <p>See Lightning Safety Policy.</p> <p>See Tornado Warning Guidelines.</p> |
| <p>Burbank High School</p> <p>Sports Complex</p> | <p>1002 Edwards Street. 78204</p> <p>1000 Edwards Street</p> | <p>Burbank Athletic Complex: South end of parking lot.</p> <p>Main gym: south end of the main parking lot</p> <p>SSC: Enter at intersection of West Glenn and Edwards street.</p> | <ul style="list-style-type: none"> • Main School building • Team Buses • Spectator vehicles | <p>BAC southeast corner</p> <p>Main gym: Southeast doorway</p> <p>Athletic Training room</p> | <p>See Lightning Safety Policy.</p> <p>See Tornado Warning Guidelines.</p> |
| Edison High School | 701 Santa Monica | <p>Football field: From Fresno Street, enter campus; field is directly to your right.</p> <p>Boys Gym: From Fresno Street, enter campus, and gym is located directly to your left as you travel beside the track.</p> <p>Girls Gym: From Fresno Street, enter campus, and gym is located directly to your left as you pass the softball field.</p> <p>Baseball Field: From Fresno street, enter campus, field is opposite to the softball field to the far left.</p> <p>Softball Field: From Fresno street, enter campus, field is directly to your left.</p> | <ul style="list-style-type: none"> • Main Building • Girls Gym/Boys Gym (whichever is closest) • Team Buses • Spectator vehicles | <ol style="list-style-type: none"> 1. Football Fieldhouse located down the main hallway to your left. 2. Girls Gym located at the backside of the gym | <p>See Lightning Safety Policy.</p> <p>See Tornado Warning Guidelines.</p> |

| Site | Address | Specific information to locate emergency scene | Additional Safe Shelter Info. | AED Location(s) | Additional Information |
|------------------------------|--------------------------|--------------------------------------------------------------------------------------------------------------------------------------------------------------------------------------------------------------------------------------------------------------------------------------------------------------------------------------------------------------------------------------------------------------------------------------------------------------------------------------------------------------------------------------------------|------------------------------------------------------------------------------------------------------------------------------------------------------------------------------------------------------------|------------------------------------------------------------------------------------------------------------------------------------------------------------------------------------------------------------------------------------------------------------------------------------|----------------------------------------------------------------------------|
| Fox Tech High School | 637 N. Main Ave. | <p>Football fields: west side of campus on S. Flores Street (727 Quincy)</p> <p>Gym: proceed to parking lot entrance off of Quincy Street</p> <p>Softball Field: proceed to parking lot entrance off of Quincy Street</p> | <ul style="list-style-type: none"> • Main School building • Team Buses • Field House • Spectator vehicles | <ol style="list-style-type: none"> 1. Northwest section of main gym. 2. Outside the Nurse's office. 3. With the Athletic Trainer. | <p>See Lightning Safety Policy.</p> <p>See Tornado Warning Guidelines.</p> |
| Highlands High School | 3118 Elgin Ave. | <p>Football/ Soccer fields: Access on Elgin. Enter School property across from tennis courts. 1 person will lead EMS behind the construction to the field.</p> <p>Gym: proceed to entrance on Elgin Ave.</p> <p>Baseball enter off Hiawatha at Anita.</p> <p>Softball: Access from Anita at Villarreal</p> <p>Soccer fields: entrance off Hiawatha Street Field below Highlands (Highland War hawks Field): 3135 Hiawatha- enter off Hiawatha St.</p> <p>Tennis Courts: Access from Elgin at Greer</p> | <ul style="list-style-type: none"> • Main School building • Weight room for Visiting Team • Locker room for Home Team • Team Buses • Spectator vehicles | <ol style="list-style-type: none"> 1. Main Gym on wall next to the Girls Locker room 2. Outside of Nurse's office | <p>See Lightning Safety Policy.</p> <p>See Tornado Warning Guidelines.</p> |
| Houston High School | 4635 East Houston Street | <p>Football / Baseball / Softball fields: Use left gated entrance next to Music building past the light on Sapphire Dr. on E. Houston Street. Drive to back of building to access all fields.</p> <p>Gym: Enter at light on East Houston Street. Drive past gated opening, continue past wheelchair ramps to your right. you will see four (4) double doors on your right, this the gym entrance.</p> | <ul style="list-style-type: none"> • Main School building • Team Buses • Spectator vehicles | <ol style="list-style-type: none"> 1. Outside the Athletic Training Room in the east hallway, closest to the main building between the gyms. 2. In the front of the main building on the wall by the nurse's office in the 100 hallway by the main office. | <p>See Lightning Safety Policy.</p> <p>See Tornado Warning Guidelines.</p> |
| Jefferson High School | 723 Donaldson | <p>Football/Soccer fields: West side of campus on Wilson Street</p> <p>Baseball/Softball/Tennis: proceed to entrance on east side of campus at the corner of Club and Kampmann.</p> <p>Practice Soccer Field: located at the 1700 block of Donaldson and W. Gramercy</p> | <ul style="list-style-type: none"> • Main Building • Gyms • Team Buses • Spectator vehicles | <ol style="list-style-type: none"> 1. Main Building 1st floor next to the nurse's office 2. Main Gym on the right wall of the entrance 3. AUX Gym on the right wall of the entrance | <p>See Lightning Safety Policy.</p> <p>See Tornado Warning Guidelines.</p> |

| Site | Address | Specific information to locate emergency scene | Additional Safe Shelter Info. | AED Location(s) | Additional Information |
|-------------------------------------------------|-------------------------|-------------------------------------------------------------------------------------------------------------------------------------------------------------------------------------------------------------------------------------------------------------------------------------------------------------------------------------------------------------------------------------------------------------------------------------------------------------------------------------------------------------------------------------------------------------------------------------------------------------------------------------------------------------------------------------------------------------------------------------|--------------------------------------------------------------------------------------------------------------------------------------------------------------------------------------------|------------------------------------------------------------------------------------------------------------------------------------------------------------------------------------------------------------------------------------------------------------------------------------------------------------------------------------------------------------------------------------------------------------------|----------------------------------------------------------------------------|
| Lanier High School | 1514 Cesar Chavez Blvd. | <p>LAC (Lanier Alumni Center): proceed to entrance off of Cesar Chavez Blvd., northwest of campus.</p> <p>Football/Soccer/Track field: proceed to entrance off of Trinity St., west side of campus</p> <p>Baseball Field: proceed to entrance off of Cesar Chavez Blvd, north west of campus, located behind LAC (Lanier Alumni Center)</p> <p>Softball Field: proceed to entrance off San Fernando off Southeast side of campus</p> <p>Tennis Courts: proceed to entrance off San Fernando off Southeast side of campus</p> <p>Gym 2: proceed to entrance off San Fernando off Southeast side of campus</p> <p>Band Field: proceed entrance off Brazos on east side of campus</p> | <ul style="list-style-type: none"> • LAC (Lanier Alumni Center) • Boy's Fieldhouse • Team School Buses • Spectator vehicles • Girls Gym | <ol style="list-style-type: none"> 1. LAC (Lanier Alumni Center): north side wall inside gym 2. Boy's Field House: south wall of the Training Room located on the northwest side of building. 3. Main building: outside Nurses Clinic 4. Fine Arts Building: across from teacher's lounge & within teachers' lounge (band mobile) 5. Gym 2/CTE: west wall | <p>See Lightning Safety Policy.</p> <p>See Tornado Warning Guidelines.</p> |
| Young Women's Leadership Academy | 2123 Huisache Ave. | <p>Choir Room: proceed through parking lot located off of Mulberry.</p> | <ul style="list-style-type: none"> • Choir Room • Main Building | <ol style="list-style-type: none"> 1. Main building outside nurses' office 2. In Training Room on wall next to door | <p>See Lightning Safety Policy.</p> <p>See Tornado Warning Guidelines.</p> |
| Young Men's Leadership Academy @Wheatley | 415 Gabriel St. | <p>Football fields: Enter through the double gates off of Burleson Street.</p> <p>Gym A: Enter through the double doors off of Gabriel Street closest to North Mittman.</p> <p>Gym B: Enter through the double doors off of Burleson Street.</p> | <ul style="list-style-type: none"> • Main Building • Gyms • Team Buses • Spectator vehicles | <p>On wall opposite of the nurse's office.</p> | <p>See Lightning Safety Policy.</p> <p>See Tornado Warning Guidelines.</p> |

Site-Specific Emergency Information

| SAISD Middle Schools/Academy Schools | | | | | |
|-------------------------------------------------------|-------------------------------|---------------------------------------------------------------------------------------------------------------------------------------------------------------------------------------------------------------------------------|-----------------------------------------------------------------------------------------------------------------------------------------------------|---------------------------------------------------------------------------------------------------|---------------------------------------------------------------------|
| Site | Address | Specific information to locate emergency scene | Additional Safe Shelter Info. | AED Location(s) | Additional Information |
| Advanced Learning Academy (Fox Tech HS campus) | 637 N. Main St. 78205 | Football fields: west side of campus on S. Flores Street (727 Quincy) Gym: proceed to parking lot entrance off of Quincy Street Softball Field: proceed to parking lot entrance off of Quincy Street | <ul style="list-style-type: none"> • Main School building • Team Buses • Field House • Spectator vehicles | Northwest section of main gym. Outside the Nurse's office. With the Athletic Trainer | See Lightning Safety Policy. See Tornado Warning Guidelines |
| Hot Wells Middle School | 400 Hot Wells Blvd. 78223 | Football/ Soccer fields: entrance off Hot Wells Blvd. and New Braunfels Ave. Gym: proceed to Intermediate building entrance off Russi St. & Hot Wells Blvd. | <ul style="list-style-type: none"> • Intermediate 4-7 building • Competition Gym, Intermediate building • | Intermediate gym, Intermediate 4-7 building Intermediate 4-7 building office near sign in desk | See Lightning Safety Policy. See Tornado Warning Guidelines. |
| Bonham Academy | 925 S St. Mary's St. 78205 | Gym: Access to gym via doors on East side of campus off St. Mary's St. Field: Burnett Elementary | <ul style="list-style-type: none"> • Gym office • Spectator vehicles | Main Building: hallway outside of cafeteria of Middle school building | See Lightning Safety Policy. See Tornado Warning Guidelines. |
| Bowden Academy | 515 Willow St. 78202 | Football/Soccer fields: access of Burleson St. Gym: access off Burleson St. | <ul style="list-style-type: none"> • Gymnasium/Gym Bathroom | Main Building near the nurse's office | See Lightning Safety Policy. See Tornado Warning Guidelines. |

| Site | Address | Specific information to locate emergency scene | Additional Safe Shelter Info. | AED Location(s) | Additional Information |
|------------------------------------------|--------------------------|-------------------------------------------------------------------------------------------------------------------------------------------------------------------------------------------------------------------------------------------------------------------------------------------------------------------------------------------------------------------------------------------------------------------------------------------------------------------------------------------------------------------------------------------------------------------------------------------------|---------------------------------------------------------------------------------------------------------------------------------------|---------------------------------------------------------------------------------------------------------------------------------------------------------------------------|----------------------------------------------------------------------------|
| Cotton Academy | 1616 Blanco / 78212 | Football/Soccer fields: Access off Aganier Ave. between Fulton & W Gramercy. Gym: East side of campus. Access off Aganier Ave. between Fulton & W Gramercy. | <ul style="list-style-type: none"> • Gym | Outside Main office | <p>See Lightning Safety Policy.</p> <p>See Tornado Warning Guidelines.</p> |
| Democracy Prep at Stewart Academy | 1950 Rigsby 78210 | All Access off Rigsby Avenue | <ul style="list-style-type: none"> • Gym | Across the hall from the Nurse's office | <p>See Lightning Safety Policy.</p> <p>See Tornado Warning Guidelines.</p> |
| Davis Middle School | 4702 East Houston Street | Football fields: Enter at East Houston and Whispering Creek, turn left at the second entrance off Whispering Creek. Gym A: Enter at light on East Houston Street and Sapphire Street. Turn right onto Holly Spring. Enter parking lot on your right. Pull up to the small gate by the gym. Enter the gym through the double doors on your right. Gym B: Closest to East Houston Street. Enter at light on East Houston Street, make an immediate left, go to the far east end of the building. You will see a set of double doors, which is the entrance to the gym. | <ul style="list-style-type: none"> • Main Building • Gyms • Team Buses • Spectator vehicles | Main Building: 1st floor next to the nurse's office) Main Gym: on the left wall of the entrance Field House: on the right wall of the entrance | <p>See Lightning Safety Policy.</p> <p>See Tornado Warning Guidelines.</p> |
| Redeemer Lutheran Church Gym | 2507 Fredericksburg Rd | Gym: Proceed to entrance on Quentin Dr. | <ul style="list-style-type: none"> • Locker rooms • Team bus • Spectator's vehicles | If available with AT on site | |

| | | | | | |
|----------------------------------|-------------------|------------------------------------------------|------------------------------------------------------------------------------------|-------------------------------------|--|
| Mildred Baskin Elementary | 630 Crestview Dr. | Gym: Proceed to entrance off of Babcock | <ul style="list-style-type: none">• Team Bus• Main Building | If available with AT on site | |
|----------------------------------|-------------------|------------------------------------------------|------------------------------------------------------------------------------------|-------------------------------------|--|

| Site | Address | Specific information to locate emergency scene | Additional Safe Shelter Info. | AED Location(s) | Additional Information |
|-----------------------------|------------------------------|---------------------------------------------------------------------------------------------------------------------------------------------------------------------------------------------------------------------------------------------------------------------------------------------------------------------------------------------------------------------------------------------------------------------------------------------------------------------------------------------------------------|-------------------------------------------------------------------------------------------------------------------------------------------------------------------|--------------------------------------------------------------------------------------|----------------------------------------------------------------------------|
| Harris Middle School | 325 Pruitt Ave. | <p>Gym: Pass the front of the school, turn right at the first parking lot entrance, past the first building on the right. The gym is located in the second building.</p> <p>Football/ Soccer field: Pass the front of the school, turn right at first parking lot entrance. Continue straight and the field will be on your left-hand side.</p> <p>Tennis Court: Pass the front of the school, turn right at first parking lot entrance. Tennis courts are located on the left side.</p> | <ul style="list-style-type: none"> • Main School building • Portable Storage Building • Team Buses • Spectator vehicles | Gym: Southeast of the gym | <p>See Lightning Safety Policy.</p> <p>See Tornado Warning Guidelines.</p> |
| Hawthorne Academy | 115 W. Josephine St. / 78212 | <p>Gym: Access to gym from staff lot on corner of Josephine and River Rd. Use glass doors entrance to gym on SW corner of building near library.</p> <p>Field: Access field via lot off Ashby Pl on rear of campus.</p> | <ul style="list-style-type: none"> • Interior hallway from gym to cafeteria • Spectator Vehicles | 1st floor by the breeze way. 2nd floor by the breezeway. | <p>See Lightning Safety Policy.</p> <p>See Tornado Warning Guidelines</p> |
| Mission Academy | 9210 S. Presa 78223 | <p>Football/ Soccer Fields: Access East/back side of campus from Mission Shadow</p> <p>Gym: Back side of campus in Southeast corner. Follow main parking lot around building or access from Mission Shadow</p> | <p>Competition Gym</p> <p>Spectator Vehicles</p> | <p>Competition Gym</p> <p>Main Building: Main hall outside nurse's office</p> | <p>See Lightning Safety Policy.</p> <p>See Tornado Warning Guidelines</p> |
| Will Rogers Academy | 314 Galway 78223 | <p>Gym: Access off McIlvaine closer to Breeden St.</p> | Gym: on McIlvaine between Beacon Ave. & Breeden St. | In hallway immediately to left of Main Office, Inside the hallway that leads to gym. | <p>See Lightning Safety Policy.</p> <p>See Tornado Warning Guidelines</p> |

SAISD Middle Schools/Academies

| Site | Address | Specific information to locate emergency scene | Additional Safe Shelter Info. | AED Location(s) | Additional Information |
|------|---------|------------------------------------------------|-------------------------------|-----------------|------------------------|
|------|---------|------------------------------------------------|-------------------------------|-----------------|------------------------|

| | | | | | |
|---------------------------------|--------------------------------------------------------------------------------------|----------------------------------------------------------------------------------------------------------------------------------------------------------------------------------------------------------------------------------------------------------------------------------|----------------------------------------------------------------------------------------------------------------------------------------------------------------------|----------------------------------------------------------------|---------------------------------------------------------------------|
| Woodlawn Academy | 1717 W. Magnolia Ave / 78210 | Gym: Access gym via North doors facing Huisache Ave. Park in lot on the corner of Huisache & Zarzamora. Field: Access field via East gate off Zarzamora. Park in street. | <ul style="list-style-type: none"> • Gym • Spectator vehicles | Outside room 1202 near elevator on the first floor. Gym | See Lightning Safety Policy. See Tornado Warning Guidelines |
| Irving Academy | 1300 Delgado St. | Football fields: east side of campus. Gym: proceed to entrance on west side of campus. | <ul style="list-style-type: none"> • Main School building • Team Buses • Spectator vehicles | Inside nurse's office. Outside boys gym. | See Lightning Safety Policy. See Tornado Warning Guidelines. |
| King Middle School | 510 Morningview Drive | Football fields: Enter at MLK Drive and Eva Jo Street. Drive to rear of building. Turn right into circle; fields are on the left. Gym A and B: Enter at MLK Drive and Eva Jo Street. Drive to rear of building. Turn right into circle; gyms are on your right. | <ul style="list-style-type: none"> • Main Building • A Gym/ B Gym (whichever is closest) • Team Buses • Spectator vehicles | 3. In main Gym by the door closest to the fields | See Lightning Safety Policy. See Tornado Warning Guidelines. |
| Longfellow Middle School | 1130 East Sunshine Dr. (Boys/Girls Gym) 974 Zachary Dr. (Football/Soccer Fields). | Football fields: Fields behind Jefferson Community Church. 758 Donaldson, SA, 78201 Gym: proceed to entrance on east side of campus. | <ul style="list-style-type: none"> • Main Building • A Gym/ B Gym (whichever is closest) • Team Buses • Spectator vehicles | Main Building 1st floor between (Cafeteria and Nurses Office | See Lightning Safety Policy. See Tornado Warning Guidelines. |
| | | | <ul style="list-style-type: none"> • | | |

| Site | Address | Specific information to locate emergency scene | Additional Safe Shelter Info. | AED Location(s) | Additional Information |
|---------------------------------------|--------------------|---------------------------------------------------------------------------------------------------------------------------------------------------------------------------------------------------------------------------------------------------------------------------------------------------------------------------------------------------------------------------------------------------------------------------------------------------------------------------------------------------------------------------------------------------------------------------------------------------------------------------------------------------------------------------------------------------------------------------------------------------------------------------------------------|----------------------------------------------------------------------------------------------------------------------------------------------------------------------|-------------------------------------------------|----------------------------------------------------------------------------|
| Kelley at Lowell Middle School | 919 Thompson Place | <p>Gym: turn onto Thompson Place, then turn right on to Niemeyer St. Last building on your left-hand side is the gym. A little further down there is a double gate. Turn left and head to the gym.</p> <p>Football/ Soccer Field: Turn onto Thompson Place. As you pass the front of the school, take the second parking lot entrance on right side, and then take an immediate left. Then continue on road and the Football/ Soccer field is straight ahead</p> <p>Tennis Courts: are located right in front of the gym; turn onto Thompson Place, then turn right on to Niemeyer Street. Last building on your left-hand side is the gym. A little further down there is a double gate. Turn left and head to the gym. Tennis courts are located right in front.</p> | <ul style="list-style-type: none"> • Main Building • A Gym/ B Gym (whichever is closest) • Team Buses • Spectator vehicles | Gym: Southeast side of the A Gym | <p>See Lightning Safety Policy.</p> <p>See Tornado Warning Guidelines.</p> |
| Poe Middle School | 814 Aransas Ave. | <p>Football fields: Northwest side of campus parking lot.</p> <p>Main Gym: Park at the main campus parking lot off New Braunfels. A coach will escort you through campus to the injured athlete.</p> | <ul style="list-style-type: none"> • Main School building • Team Buses • Spectator vehicles | In hallway on wall next to Nurse Lott's office. | <p>See Lightning Safety Policy.</p> <p>See Tornado Warning Guidelines.</p> |

| Site | Address | Specific information to locate emergency scene | Additional Safe Shelter Info. | AED Location(s) | Additional Information |
|-----------------------------|-------------------------|---------------------------------------------------------------------------------------------------------------------------------------------------------------------------------------------------------|---------------------------------------------------------------------------------------------------------------------------------------------------------------------------|---------------------------------------------------------------------|----------------------------------------------------------------------------|
| Rhodes Middle School | 3000 Tampico | Football: proceed to emergency entrance off of Tampico. Gym: proceed to emergency entrance on west side of campus off of Barclay. | <ul style="list-style-type: none"> • Nearest Gym • Main School Building (if available) • Team School Buses • Spectator vehicles | East wall of the Main Gym | <p>See Lightning Safety Policy.</p> <p>See Tornado Warning Guidelines.</p> |
| Rogers Middle School | 314 Galway St. | Football/Soccer fields: Access from Fairlawn Gym/Tennis: proceed to entrance off Pickwell Dr. | <ul style="list-style-type: none"> • Main Building • Gyms • Team Buses • Spectator vehicles | Hallway between Main Office and Clinic Spectators Gym | <p>See Lightning Safety Policy.</p> <p>See Tornado Warning Guidelines.</p> |
| Crockett Academy | 2215 Morales | Gym: access from staff lot at corner of Morales and Calaveras. Use solid doors to north building closest to playground Athletic Field: Access gate next to gym via lot off Morales St. | <ul style="list-style-type: none"> • Main Gym • Team Bus • Spectator vehicles | Located in main hallway past clinic | <p>See Lightning Safety Policy.</p> <p>See Tornado Warning Guidelines.</p> |
| Fenwick Academy | 1930 Waverly Ave | Gym: Access off backside of campus off Kentucky Ave. Athletic Field: Access off Kentucky Ave. and Wilson | <ul style="list-style-type: none"> • Main Gym • Team Bus • Spectator vehicles | Located in main building near nurses office | <p>See Lightning Safety Policy.</p> <p>See Tornado Warning Guidelines.</p> |

| Site | Address | Specific information to locate emergency scene | Additional Safe Shelter Info. | AED Location(s) | Additional Information |
|------------------------------|----------------------|-------------------------------------------------------------------------------------------------------------------------------------------------|----------------------------------------------------------------------------------------------------------------------------------------------------|------------------------|----------------------------------------------------------------------------|
| Tafolla Middle School | 1303 W. Cesar Chavez | <p>Football: proceed to emergency entrance off of Colorado.</p> <p>Gym: proceed to emergency entrance on east side of campus.</p> | <ul style="list-style-type: none"> • Main School Building (if available) • Team School Buses • Spectator vehicles | South wall of Main Gym | <p>See Lightning Safety Policy.</p> <p>See Tornado Warning Guidelines.</p> |

| Site | Address | Specific information to locate emergency scene | Additional Safe Shelter Info. | AED Location(s) | Additional Information |
|-------------------------------------------------|--------------------|--------------------------------------------------------------------------------------------------------------------------------------------------------------------------------------------------------------------------------------------------------|----------------------------------------------------------------------------------------------------------------------------------------------------------------------------|------------------------------------------------------------------------------------------|---------------------------------------------------------------------|
| Whittier Middle School | 2101 Edison Dr. | Football field: Come down Edison Dr. and the cross street is Angeles. Boys/Girls Gym: From Edison Dr. turn right on Angeles. Turn right on Vereda. | <ul style="list-style-type: none"> • Main Building • Girls Gym/Boys Gym (whichever is closest) • Team Buses • Spectator vehicles | Gyms: located just outside the entrance. Main Building: right outside the library | See Lightning Safety Policy. See Tornado Warning Guidelines. |
| Young Men's Leadership Academy @Wheatley | 415 Gabriel Street | Football fields: Enter through the double gates off of Burleson Street. Gym A: Enter through the double doors off of Gabriel Street closest to North Mittman. Gym B: Enter through the double doors off of Burleson Street. | <ul style="list-style-type: none"> • Main Building • Gyms • Team Buses • Spectator vehicles | On the wall opposite of the nurse's office. | See Lightning Safety Policy. See Tornado Warning Guidelines. |
| Young Women's Leadership Academy | 2123 Huisache Ave. | Athletic Fields: proceed to gated entrance off of Huisache on west side of campus Main Gym: proceed through parking lot located off of Mulberry Gym B: proceed through parking lot located off of Mulberry | <ul style="list-style-type: none"> • Main Gym • Team Buses • Spectator vehicles | Located on west wall between bleachers in Main Gym | See Lightning Safety Policy. See Tornado Warning Guidelines. |

Site-Specific Emergency Information

| SAISD Central Site Facilities | | | | | |
|--------------------------------------------|----------------------------------------------|----------------------------------------------------------------------------------------------------------------------------------------------------------------------------------------------------|-----------------------------------------------------------------------------------------------------------------------------------------------------------------------------------------------------------------------------------------------------------------------------------------------------------------------------------------------------------------------------------------------------------------------------------|--------------------------------------------------------------------------------------------------------------------------------------|----------------------------------------------------------------------------|
| Site | Address | Specific information to locate emergency scene | Additional Safe Shelter Info. | AED Location(s) | Additional Information |
| Alamo Stadium / ACC/Shot and Discus | 110 Tuleta (Across from Trinity University). | Football fields: North end of stadium in the horse shoe Gym (ACC): East side of Alamo Stadium SAWS private drive access off St. Mary's St. Head west at the Tuesday Morning Musical Club | <ul style="list-style-type: none"> • Locker rooms • Team Buses • Spectator vehicles • Rest rooms • Area underneath east side stands • For shot put there will a bus at Alamo Stadium and a bus at the throwing site. Athletic Trainer and SAISD Officer at the throwing area will announce for athletes to load the bus and notify spectators to go to their vehicles | <p>Southwest side of stadium near spectators' entrance (Next to elevator).</p> <p>On wall inside ACC near spectator entrance.</p> | <p>See Lightning Safety Policy.</p> <p>See Tornado Warning Guidelines.</p> |
| SAISD Sports Complex | 1000 Edwards Street. | Football / Soccer / Baseball fields: Edwards St. west side entrance Softball: proceed to entrance on south side of the complex off of Boehmer Ave. | <ul style="list-style-type: none"> • Locker rooms • Restrooms • Baseball Field 1 viewing area • Team Buses • Spectator vehicles | <ol style="list-style-type: none"> 1. Inside Baseball Training Room (Field 1). 2. Inside Softball Press Box. | <p>See Lightning Safety Policy.</p> <p>See Tornado Warning Guidelines.</p> |
| McFarlin Tennis Center | 1503 San Pedro (entrance off of Ashby). | Be specific on court number. | <ul style="list-style-type: none"> • Pro Shop • Team Buses • Spectator vehicles | None | <p>See Lightning Safety Policy.</p> <p>See Tornado Warning Guidelines.</p> |

| Site | Address | Specific information to locate emergency scene | Additional Safe Shelter Info. | AED Location(s) | Additional Information |
|-----------------------------------|----------------------|---------------------------------------------------------------------------------------------------------------------------------------------------------------------------------------------------------|--------------------------------------------------------------------------------------------------------------------------|--------------------------------------------------------------------------------|-----------------------------------------------------------------------------------------------------------------|
| Fairchild Tennis Center | 1214 E. Crockett. | Be specific on court number. | <ul style="list-style-type: none"> • Community Center • Team Buses • Spectator vehicles | None | <p>See Lightning Safety Policy.</p> <p>See Tornado Warning Guidelines.</p> |
| Olmos Basin Golf Course | 7022 McCullough Ave. | Be specific on hole number. | <ul style="list-style-type: none"> • Pro shop • Team Buses • Spectator vehicles | None | <p>See Lightning Safety Policy.</p> <p>See Tornado Warning Guidelines.</p> |
| Mission Concepcion Park | 714 E Theo. 78210 | Gym access: Access to the right off Theo at the marquee that says, "Mission Concepcion Sports Complex" Follow the road to the right that says gymnasium. Proceed to building #4 (all the courts) | <ul style="list-style-type: none"> • Gym • Team Buses • Spectator Vehicles | Training Room/First Aid Room. Southeast corner of building #4 (all the courts) | <p>Site contact: Eric Markus See Lightning Safety Policy.</p> <p>See Tornado Warning Guidelines.</p> |
| Willow Springs Golf Course | 202 AT&T Parkway | Be specific on hole number. | <ul style="list-style-type: none"> • Pro shop • Team Buses • Spectator vehicles | None | <p>See Lightning Safety Policy.</p> <p>See Tornado Warning Guidelines.</p> |
| Riverside Golf Course | 203 McDonald. | Be specific on hole number. | <ul style="list-style-type: none"> • Pro shop • Team Buses • Spectator vehicles | None | <p>See Lightning Safety Policy.</p> <p>See Tornado Warning Guidelines.</p> |
| San Pedro Golf Course | 6102 San Pedro Ave. | Be specific on hole number, or exact location on driving range. | <ul style="list-style-type: none"> • Pro shop • Team Buses • Spectator vehicles | None | <p>See Lightning Safety Policy.</p> <p>See Tornado Warning Guidelines.</p> |

| Site | Address | Specific information to locate emergency scene | Additional Safe Shelter Info. | AED Location(s) | Additional Information |
|------------------------------------|----------------------------|-----------------------------------------------------------|-----------------------------------------------------------------------------------------------------------------------------|-------------------------------------------------------------------------------------------------------------------|----------------------------------------------------------------------------|
| San Antonio Natatorium | 1430 W. Cesar Chavez 78207 | Natatorium: Proceed to main entrance facing Brazos | <ul style="list-style-type: none"> • Locker rooms • Team School Buses • Spectator vehicles | Located behind 3rd door on right after registration desk. Door is labeled "Pool Supervisor Lifeguard Locker Room" | <p>See Lightning Safety Policy.</p> <p>See Tornado Warning Guidelines.</p> |
| Woodlawn Lake City Park Gym | 219 Alexander | Gym: proceed to main entrance off of Alexander | <ul style="list-style-type: none"> • Team School Buses • Spectator vehicles | If available, with the athletic trainer on site. | <p>See Lightning Safety Policy.</p> <p>See Tornado Warning Guidelines.</p> |

SAISD Central Site Facilities